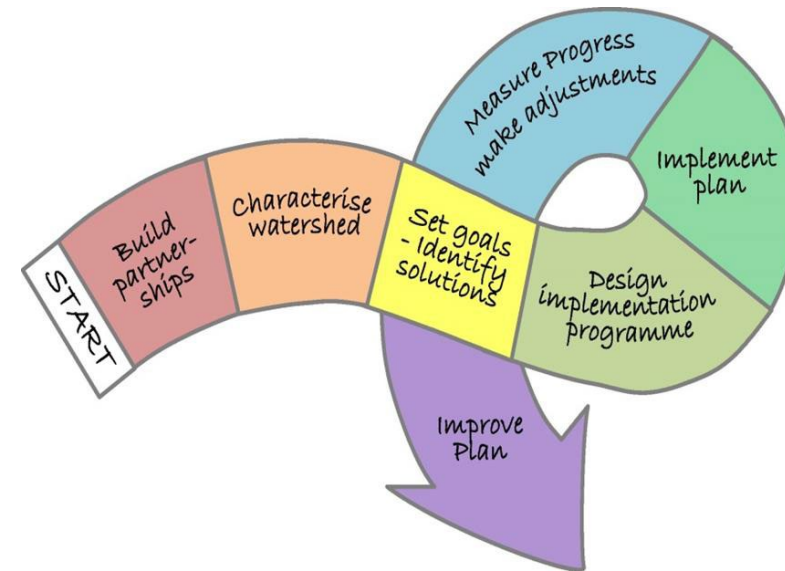


## Strengthening local water management in agricultural landscapes of the Baltic Sea Region

New services - a catalog of ideas and experiences.

## Introduction with inspiration from WaterCoG

- a. Building partnerships
- b. Characterising watershed
- c. Set goals – identify solutions and design of implementation programs
- d. Design implementation programme
- e. Plan implementation
- f. Measuring progress & making adjustments
- g. Improvement



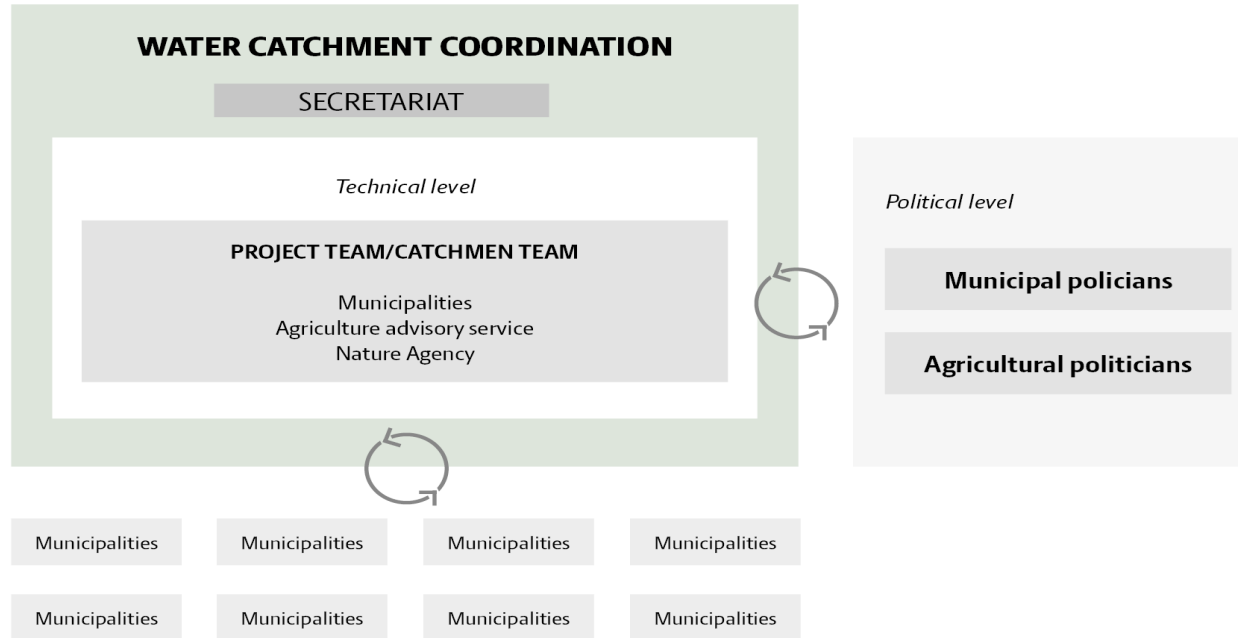
From WaterCoG

## What will the "New services" be in your country?

- a. Lithuania - Elvyra
- b. Deliver 25. March: Poland -Janusz
- c. **In draft:** Finland - Mikko
- d. **In draft:** Sweden - Mathilda
- e. **In draft:** Local water management plans in Denmark - Frank  
(Cooperation with Velas, Odense and Assens Municipality)

# Designing the implementation process at local and regional level.

## ORGANIZATION



## Representatives in the proposal from 2020:

- Seges
- Catchment officers
- The national association of municipalities
- The Nature Agency
- The Agriculture Agency
- The Environmental protection Agency
- Employees in municipalities
- Environmental policy advisers in farmers' associations
- Danish Agriculture & Food Council

From: Proposal for optimized cooperation in implementation of collective environmental measures (by Flemming Gertz, SEGES):

[https://sp.landbrugsinfo.dk/Afrapportering/innovation/2020/Sider/pm\\_20\\_7855\\_Rapport\\_SAMARBEJDE\\_OM\\_DE\\_KOLLEKTIVE\\_KVAELST\\_OFVIRKEMIDLER.pdf?download=true](https://sp.landbrugsinfo.dk/Afrapportering/innovation/2020/Sider/pm_20_7855_Rapport_SAMARBEJDE_OM_DE_KOLLEKTIVE_KVAELST_OFVIRKEMIDLER.pdf?download=true)

## Catchment officers

- a. Waterbrokers in Poland -Janusz
- c. **In Draft:** Catchment officer/catchment teams in Finland - Mikko
- d. **In draft:** Catchment officers in Sweden - Mikko
- e. **In Draft:** Catchment officers in Denmark - Frank  
(Cooperation with Velas, Odense and Assens Municipality)

***“The activity of catchment officer cannot be created by one person or organization. Expert teams from different organizations should be resourced for improve holistic advising and catchment area renovations”***

***Mikko***

# What are catchment officers working with?



Two stage ditch ???



Watercourse restoration



????



Wetlands



Constructed wetlands



Constructed wetlands with woodchips



Rewetting organic soils



Organic soil profiles



Two step ditch



Filter ditch with lime



Constructed wetland



Danish catchment officers in cooperation with landowners and contractors





# In the back of the catalog – references to:

## Local Participatory Toolbox

by Franziska Kruse

### A LEADERSHIP MANUAL – WATERDRIVE

#### The collaborative leadership

##### Introduction

To manage natural resources can sometimes be an overwhelming task. The issues are complex and the effort needed can seem insurmountable. You are often faced with social and scientific challenges — understanding the ecosystems in an area, competing ideas about the goals for addressing issues and how to achieve them, cultural differences, funding your effort, and potential economic impacts. Leadership becomes a key to society's ability to manage these processes.

It is not an easy role to enact. The complexity of many water and land management situations are related to the multiple issues, stakes, goals and parties at hand, as well as the difficulties to predict all consequences of measures taken in social-ecological systems. Such complexity suggest that progress is only possible if we continuously learn from our experiences. For leaders, enabling social and collaborative learning, involving a wide range of stakeholders, is at the core of such efforts.

## Waterdrive

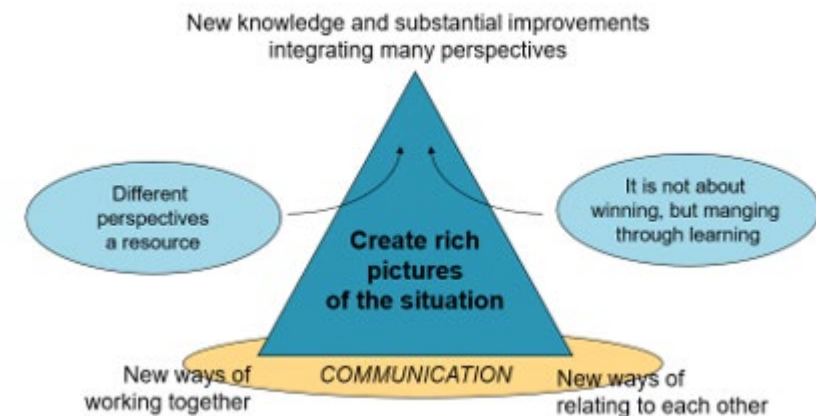
[www.water-drive.eu](http://www.water-drive.eu)

Facebook

<https://www.facebook.com/WATERDRIVEbalticsea/>

[www.waterdrive.dk](http://www.waterdrive.dk)

## The progress triangle



*Waterdrive*

A graphic element consisting of a blue and green diagonal bar on the left, transitioning into a yellow bar that tapers to the right.

STØTTET AF

**Promille**afgiftsfonden for landbrug