

Synergy between LIN and Danish innovation activities

Erik Fog, Senior Advisor

SEGES, Organic Innovation Centre

Legume Innovation Network webinar 11th May 2021

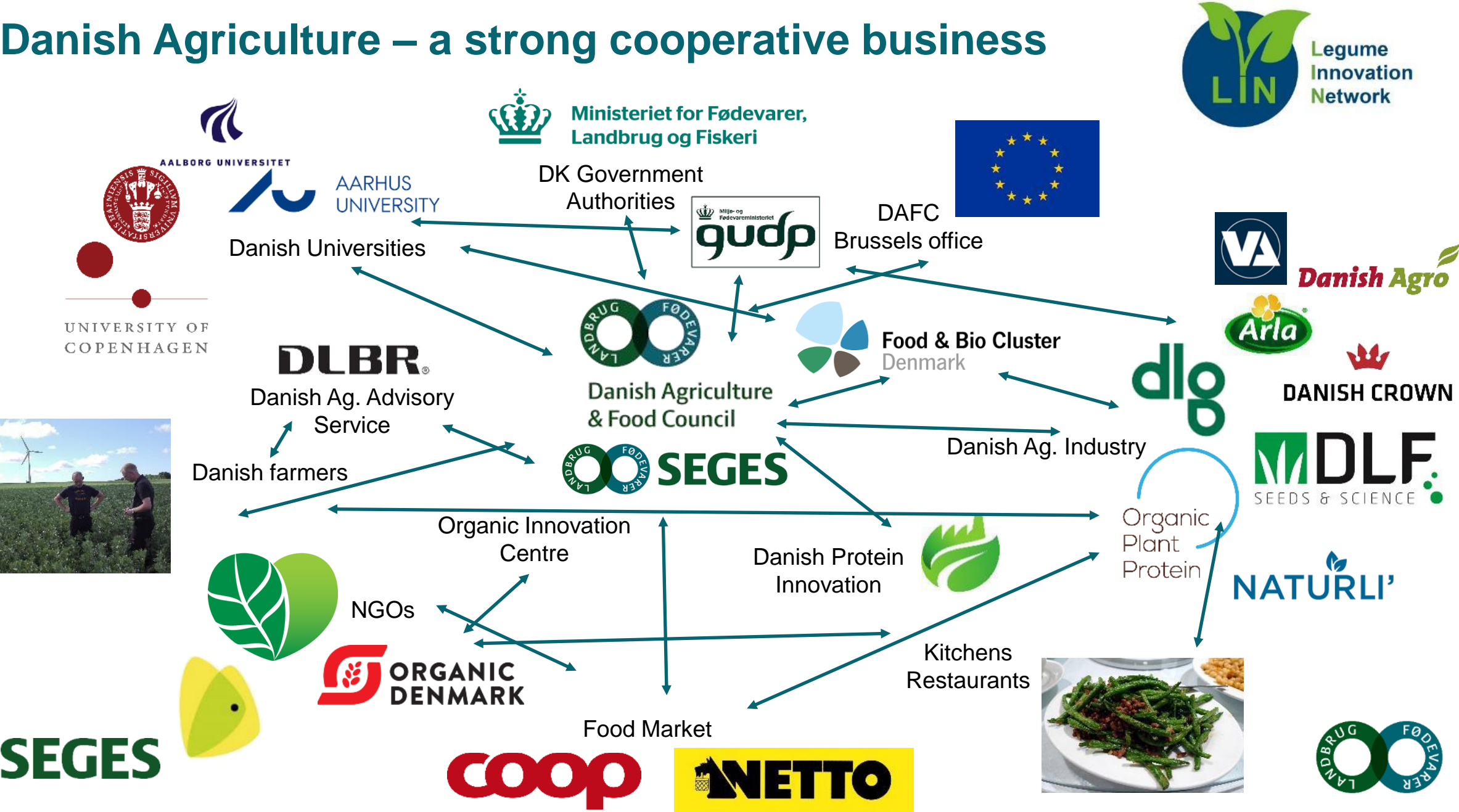


SEGES

Promilleafgiftsfonden for landbrug



Danish Agriculture – a strong cooperative business



Danish legume innovation (examples)



- Field trials with grain legumes and grassland crops ([SEGES](#) / [DTI](#) / [Advisory Service](#))
- Development projects:
 - EU: LegValue, TRUE, Diversify and more.
 - Improved Lupin management (SEGES / experienced farmers)
 - Digital DK-map – legume farmers and companies (SEGES)
 - Several projects on protein extraction from grassland crops for feed and food (SEGES, Universities, Companies)
 - Knowledge exchange Group on Lentil farming and processing (farmers and companies)
 - Innovation Workshops on legume production for the whole value chain. (FBCD)
 - Surveys on plant-based food (DAFC, SEGES, [DK Vegetarian Organization](#))



SEGES



Organizational support to more legume production



- Alliance on plant-based food (SEGES / [Food & Bio Cluster Denmark](#))
- Danish Protein Innovation (DAFC / Universities / Companies)
- National Bio-economy Panel (governmental) – [Proteins for the future](#) (recommendations)
- Research strategies for promotion of local protein production (government and organizations)
- Innovation funding: [Innovation Fund Denmark](#) / [Green Development and Demonstration Program \(GUDP\)](#)



SEGES



Possibilities in future LIN cooperation



- Platform to showcase innovation activities and results.
- Dating platform for new international cooperation (companies, universities, organizations)
- We are looking for knowledge on grain legumes for plant-based food.
- We can contribute with knowledge on legumes for food and protein production from grassland crops for feed and food.
- Interested in online workshops supported by LIN to find new cooperation partners. (Nation and / or company presentations followed by participant input and discussion).



SEGES

Photos: Inger Bertelsen and Erik Fog, SEGES

