

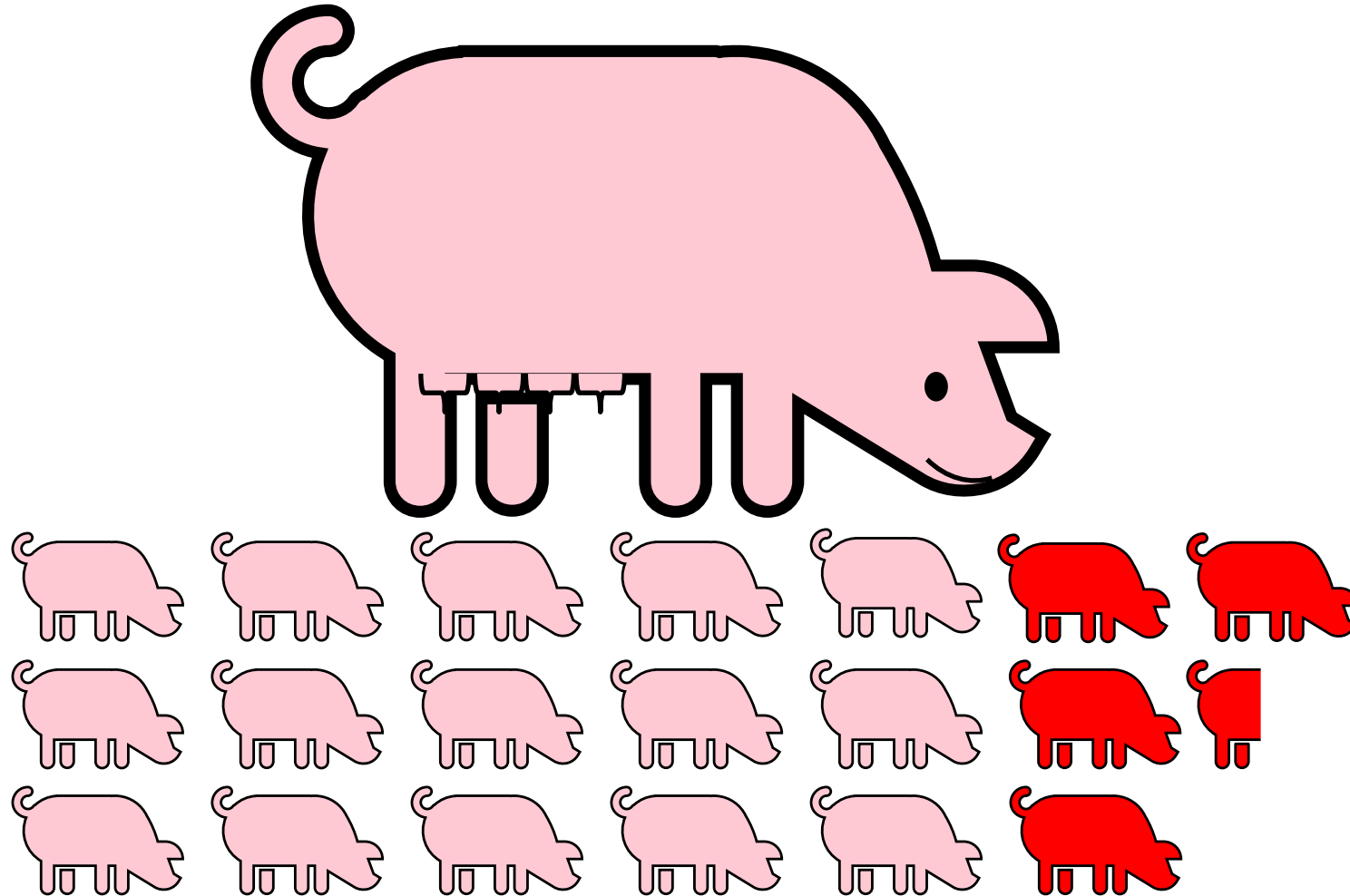
Piglets – behavior and management

Senior Scientist, Lisbeth Ulrich Hansen
SEGES, Danish Pig Research Centre

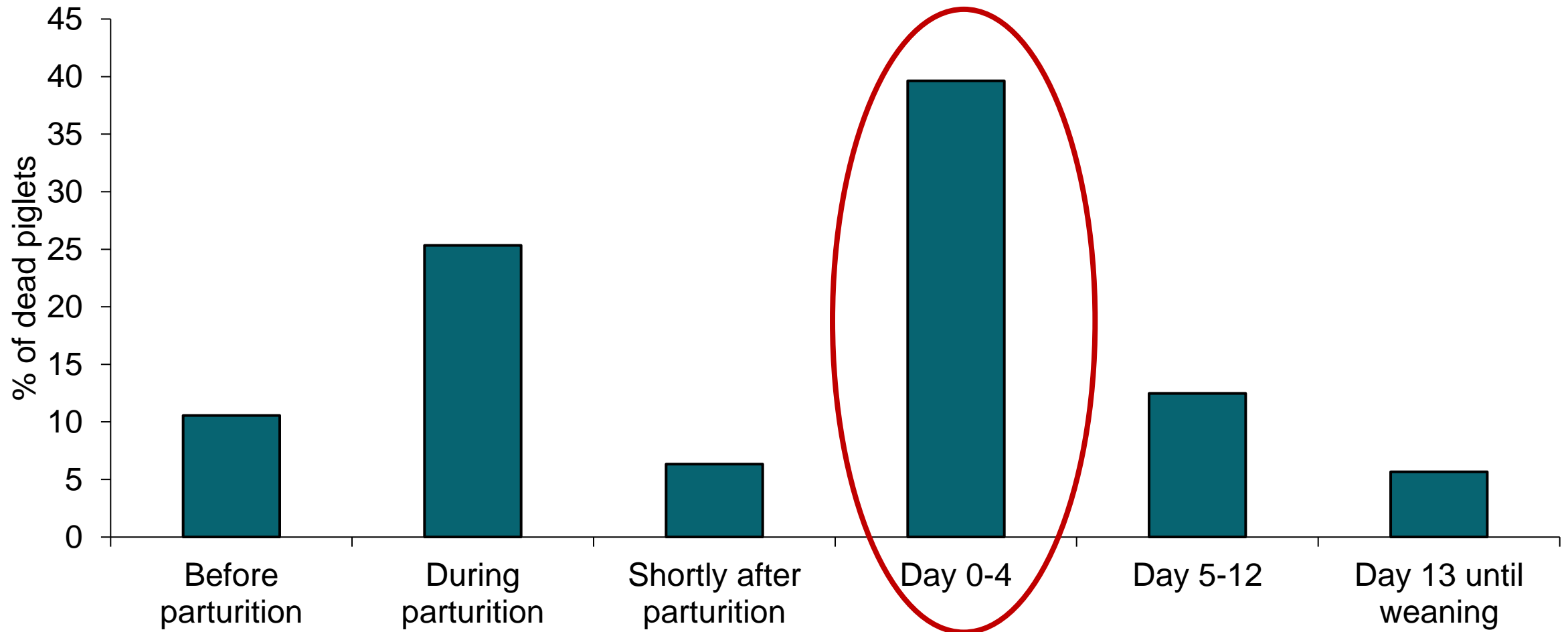
STØTTET AF

Svineafgiftsfonden

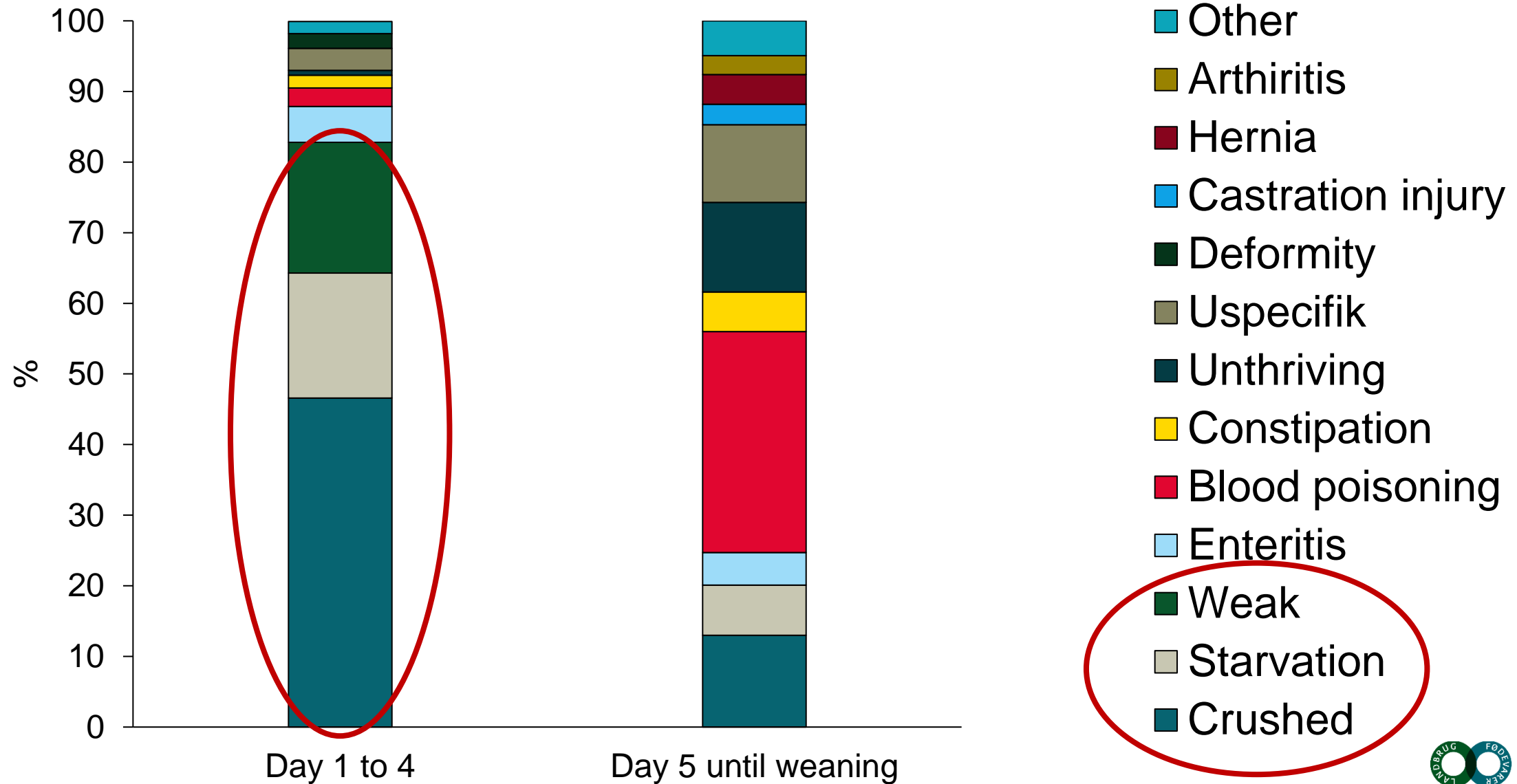
A sow with 19.4 piglets....but....



Timeline for piglet mortality (4,5 piglet pr. litter)



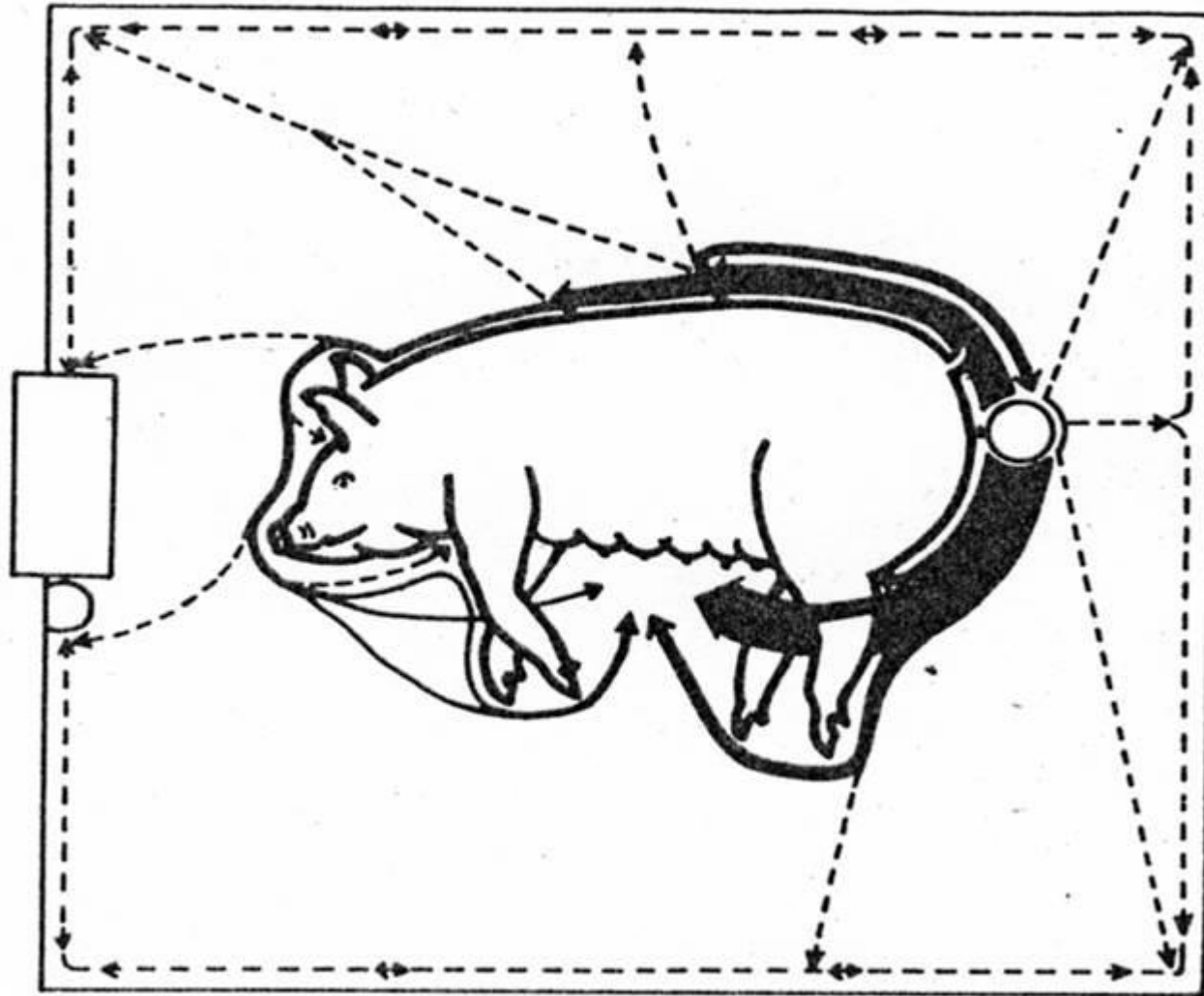
Cause of death



Danmark moving towards loose-housed sows in the farrowing pen



Which path to choose?



Farrowing nest – can we save some of the piglets?



	Control	Nest	SE	Signifikans
Total mortality (farrowing – day 4) incl. stillborn, stk. pr. litter	2,9	2,9	0,20	NS
Mortality (farrowing – equal the litter size), stk. pr. litter	2,2	2,2	0,14	NS
Mortality (equal the litter size to day 2), stk. pr. litter	0,5	0,4	0,05	NS
Mortality (day 2 – day 4), stk. pr. litter	0,2	0,2	0,04	NS

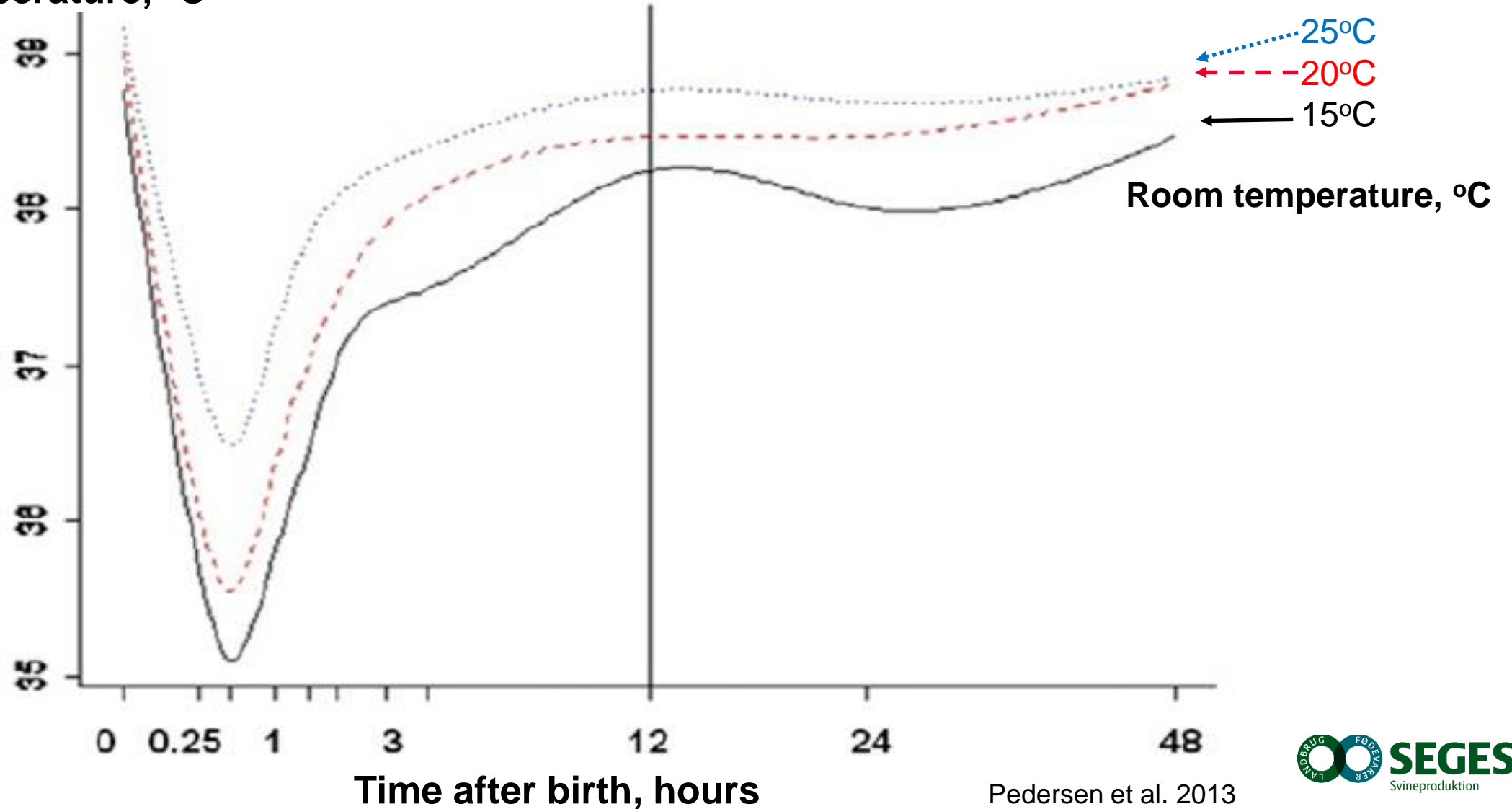
NO
Other reasons?

Piglet are born with a body temperature around 39°C out in an environment of 22°C



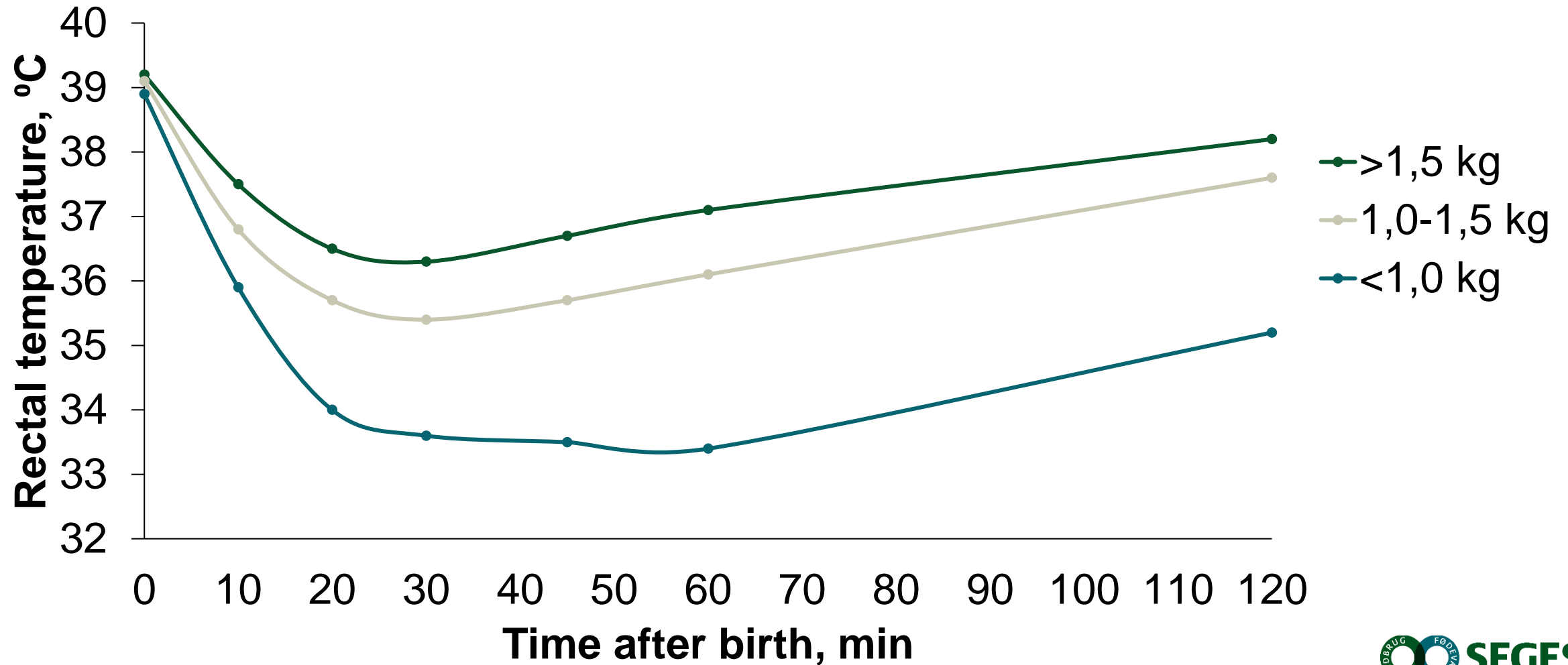
Rectal temperature – hours after birth and room temperature

Rectal temperature, °C

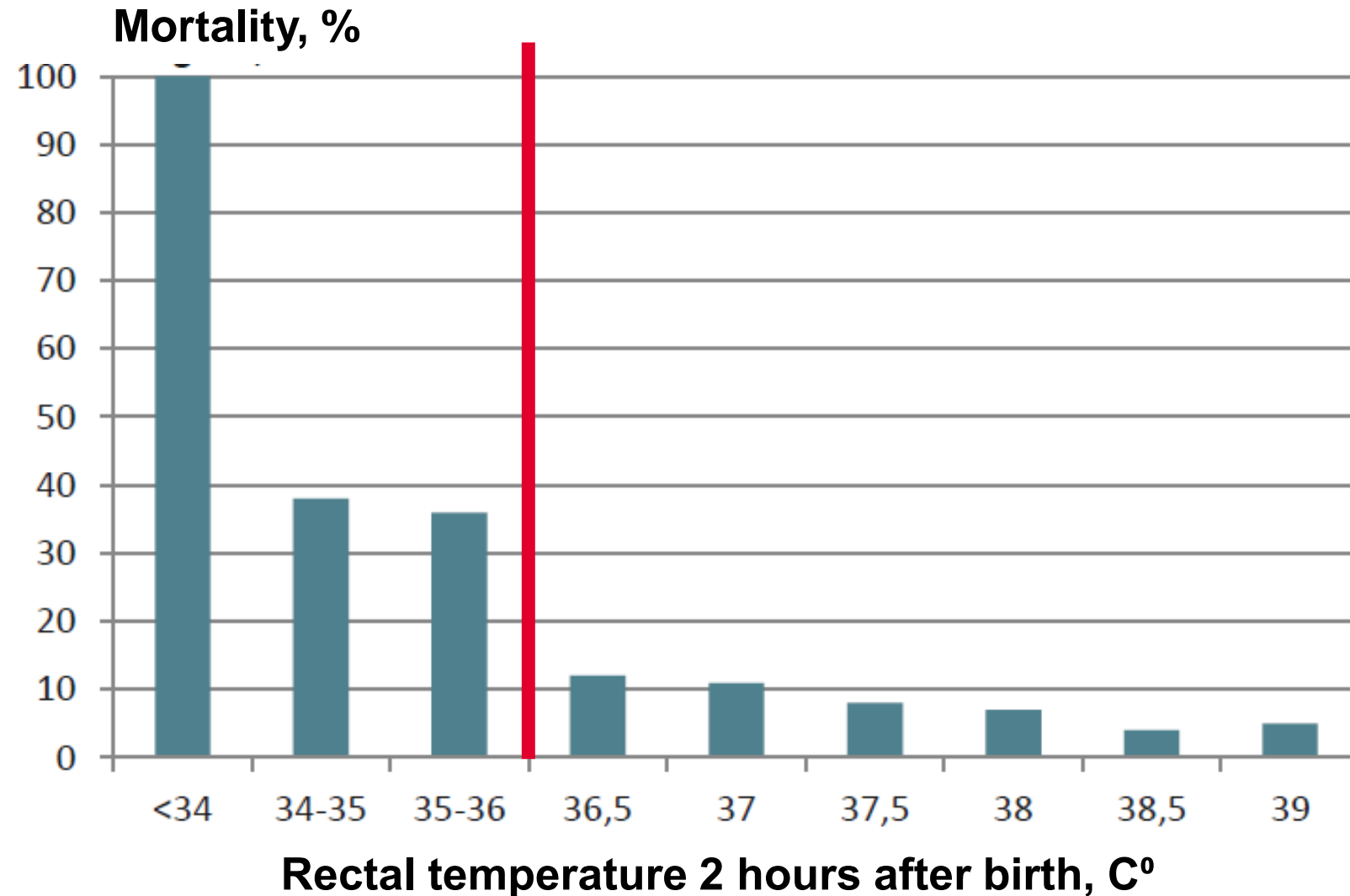


Pedersen et al. 2013

Rectal temperature – different birth weight

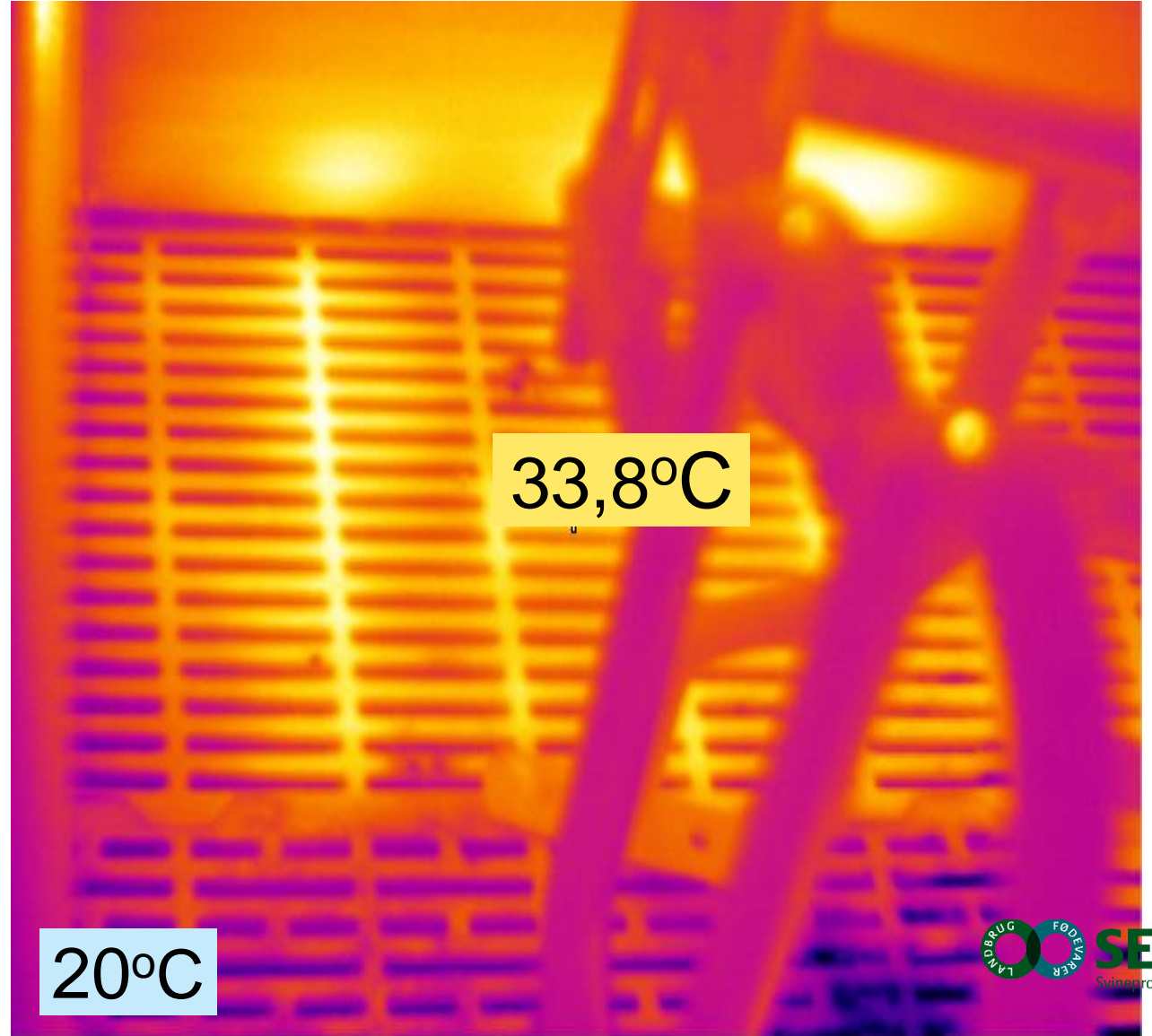


Mortality and rectal temperature – time after birth



Meddelelse 1087

Extra heat at farrowing



Extra heat at farrowing

Small piglets (under 900 g) with rectal temp. $< 35^{\circ}\text{C}$: 25% to 16%

Small piglets (under 900 g) with rectal temp. $\geq 37^{\circ}\text{C}$: 36% to 59%

- + 0,3 piglets/litter
- + 78 kr./litter



Report nr. 1176

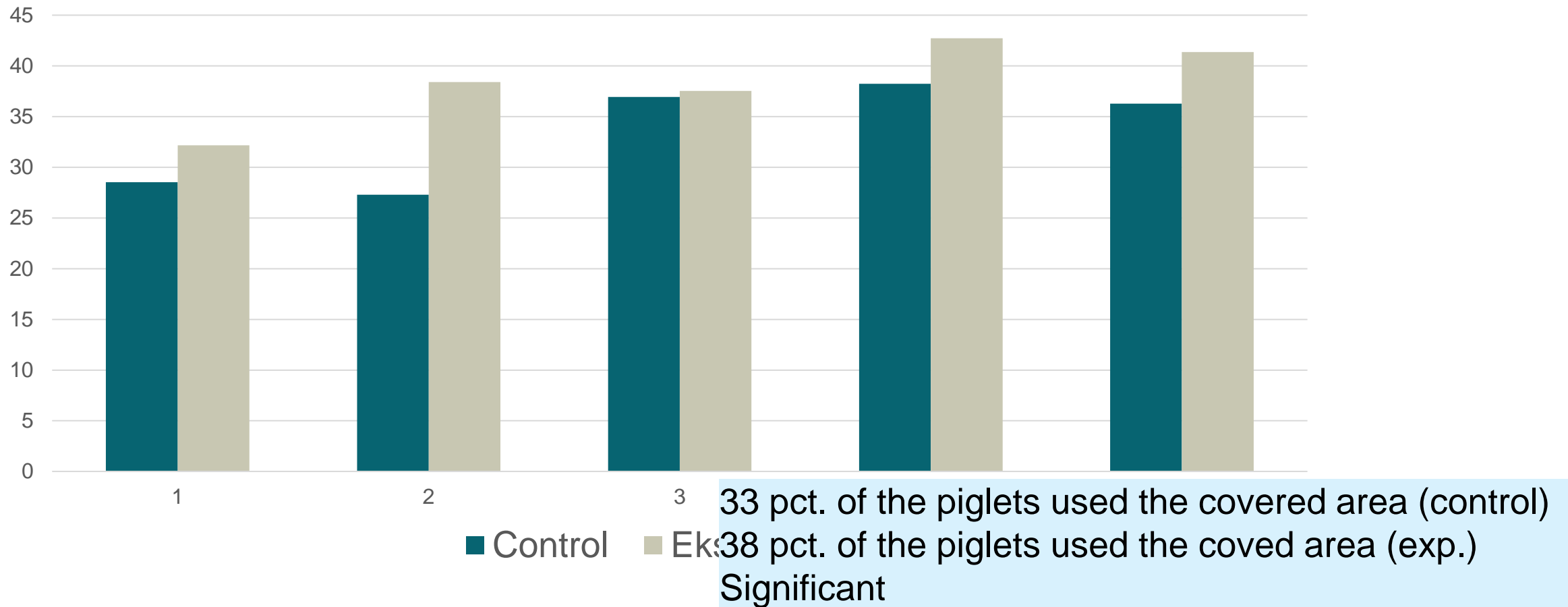
Lure or training the piglets?



Training the piglets are normal procedure, but it takes a lot of time
Can we use the normal behavior of the piglets instead?



Proportion of pigs in the covered area day 2



Report nr. 1190

Can automatic up and down-floor reduce crushing



TAK og husk!

Vær altid opdateret på den seneste faglige viden

Tilmeld dig **Nyhedsmail** fra
SEGES Svineproduktion på
www.svineproduktion.dk



 facebook.com/SegesSvineproduktion