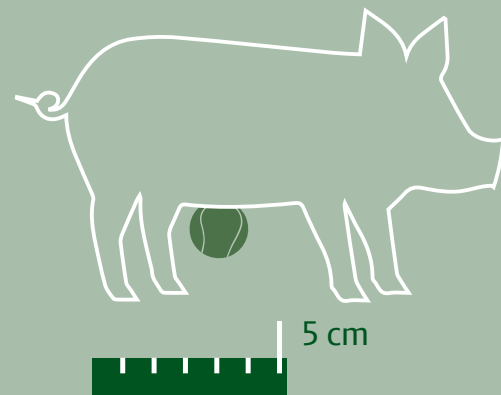
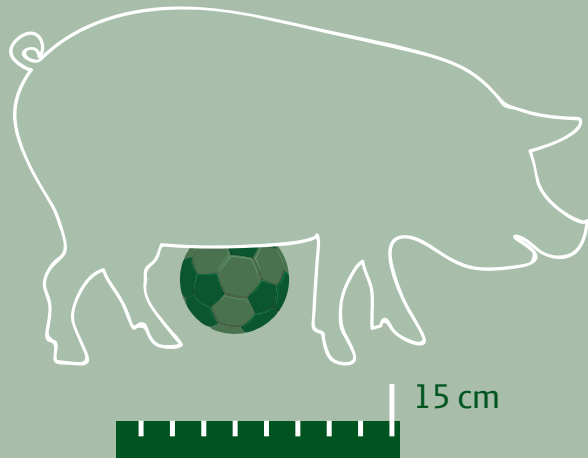


The Pig with a Hernia



Check:

- ➔ Size of the hernia (handball or tennis ball)
- ➔ Does the hernia touch the pig's leg?
- ➔ Is there a wound on the hernia?



Feel:

- ➔ Can you feel a wound on the hernia?
- ➔ Does the hernia feel warm/swollen?

WHAT NEEDS TO BE DONE

Keep the pig in the pen if:

The pig is doing well
The hernia is less than 15 cm (finishers)
The hernia is less than 5 cm (30-kg pigs)
There is no wound or warmth

In the pen for sick pigs if:

Large hernia
Wound or warmth

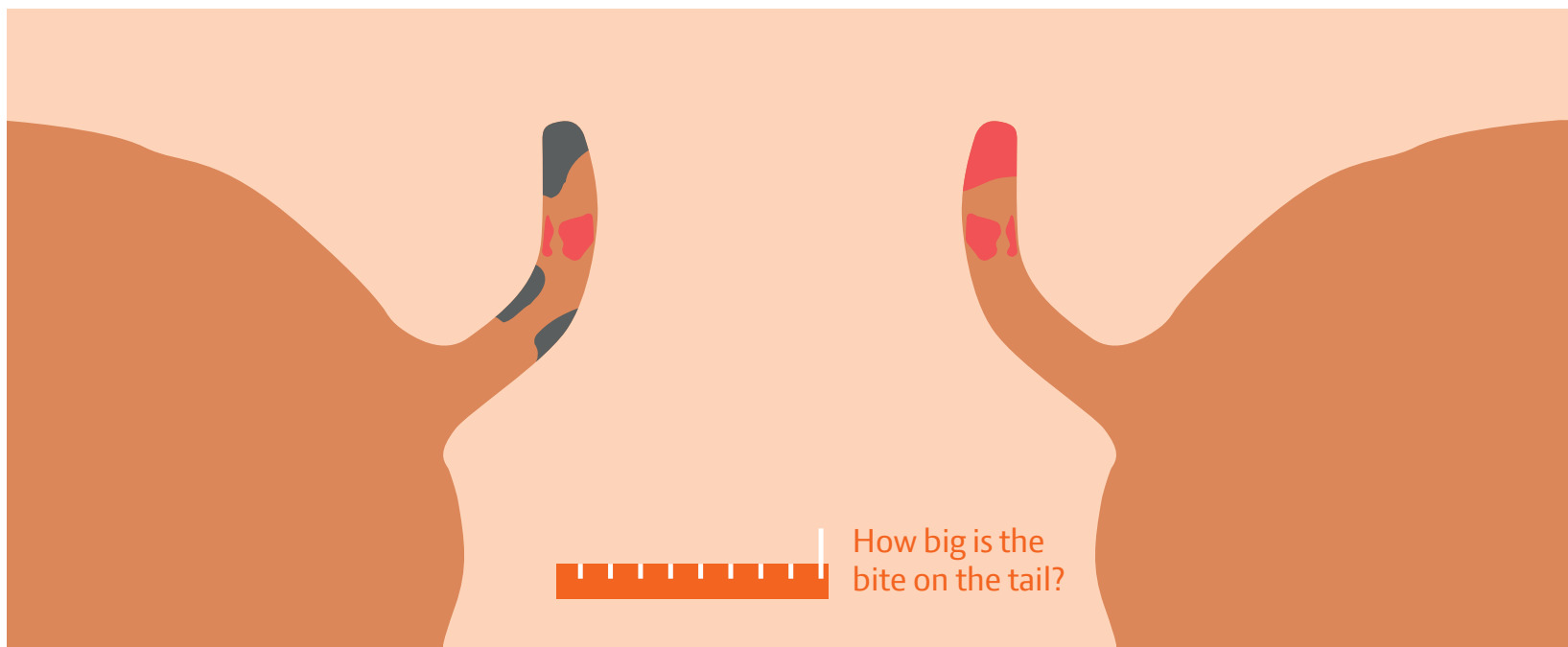


Cull:

Doing poorly
Doesn't walk normally
Large wound that cannot heal



The Pig with a Bitten Tail



Check:

- ➔ Does the pig hide its tail?
- ➔ How big is the wound?
- ➔ Is the tail red and/or swollen?



Feel:

- ➔ Is the tail sore?
- ➔ Is the tail warm/swollen?

WHAT NEEDS TO BE DONE

Keep the pig in the pen if:

The pig is doing well
The wounds are small and superficial
The tail is not infected

In the pen for sick pigs if:

Deep bite on the tail
Inflammation (warm, soreness, swelling)
Dead, blackened tissue

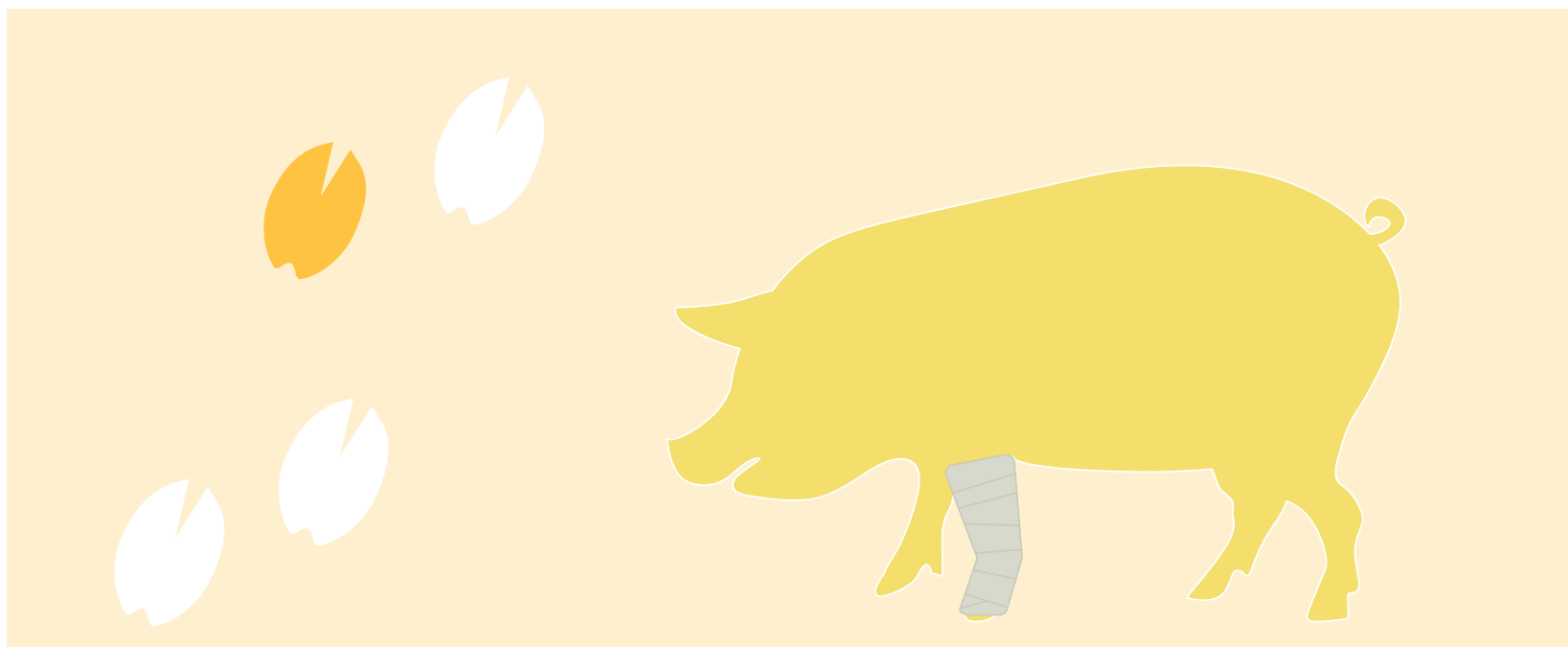


Cull:

Doing poorly
No chance for improvement



The Lame Pig



Check:

- ➔ Visible injuries to legs/hoofs?
- ➔ Is the leg swollen?
- ➔ Are there wounds around the joints?



Watch the pig as it moves:

- ➔ Is the pig walking normally?
- ➔ Is the pig walking on 3 or 4 legs?

WHAT NEEDS TO BE DONE

Keep the pig in the pen if:

The pig is doing well
It can eat and drink
It is not bullied by other pigs

In the pen for sick pigs if:

It cannot do well in the ordinary pen



Cull:

A leg is broken
There are wounds around swollen joints
Joint(s) swollen for extended period of time

